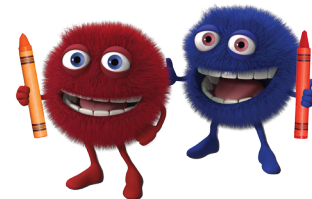


MAKE A SNOWFLAKE!



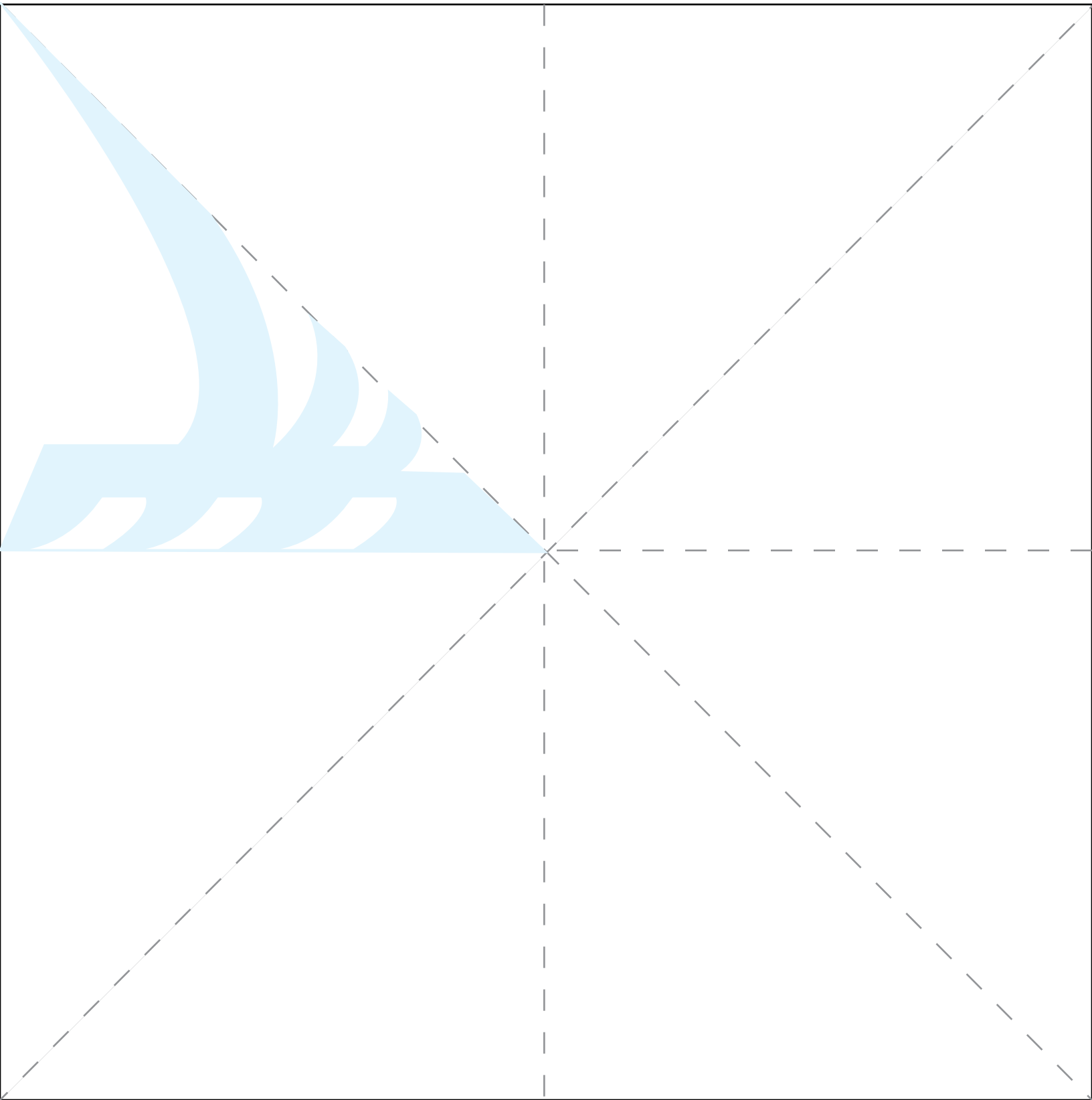
Supplies:

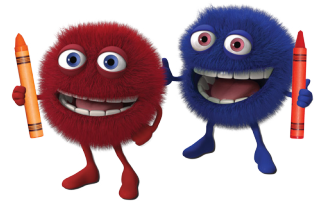
- Printer
- Paper
- Scissors
- Glitter and glue if you want to decorate

Directions:

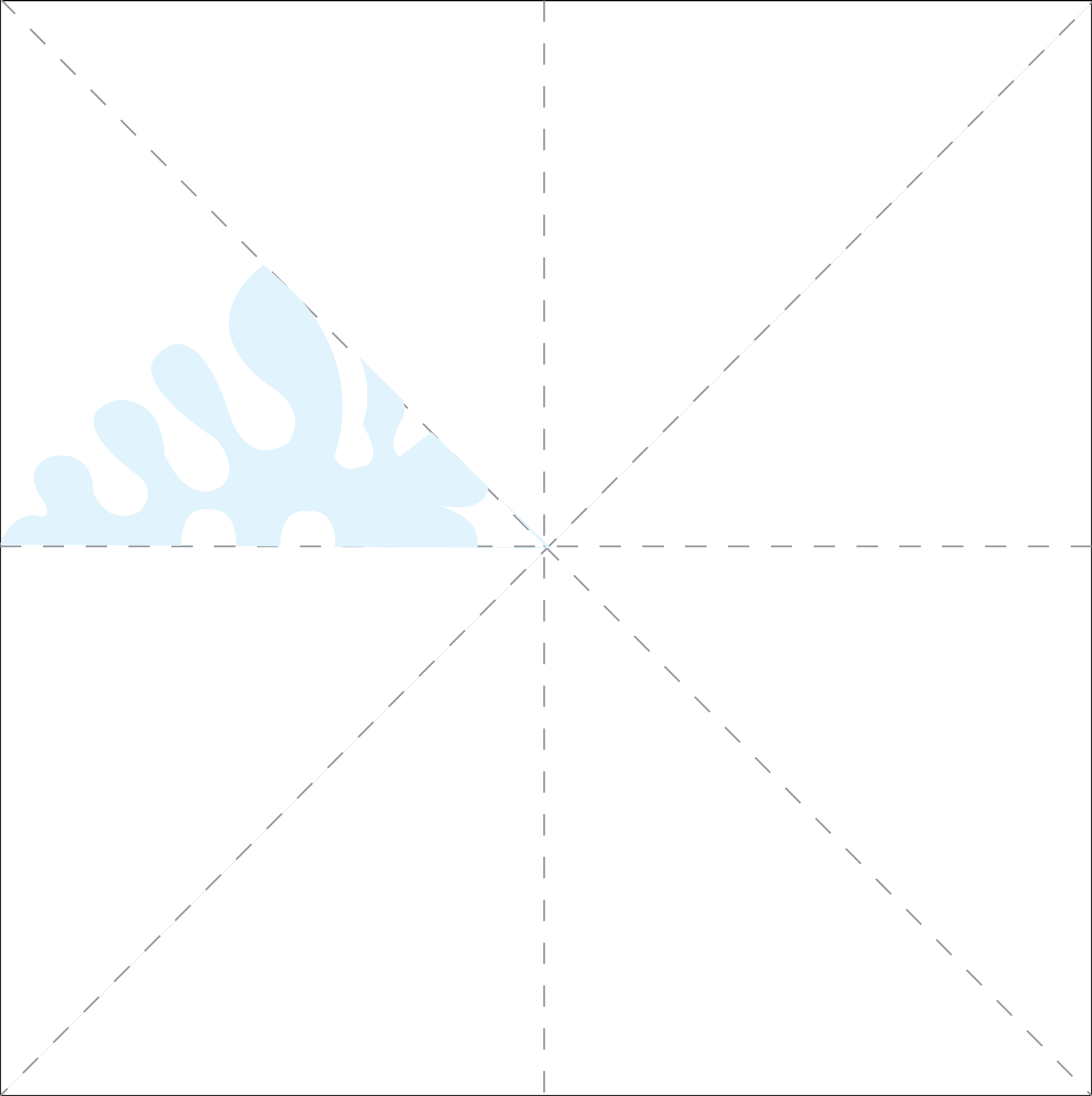
- Print the snowflake patterns. If printing on 8 1/2 x 11, reduce to fit paper or use a larger sized paper.
- Trim on the solid lines.
- Fold on dotted lines. Folding in half, then half again, continuing until you have a triangle as shown.
- Make sure the light blue pattern is facing out. Follow that to cut out snowflake shape.

EASY





HARDER



HARDEST

